

# PERSONAL PROTECTIVE EQUIPMENT

## PPE: PERSONAL PROTECTIVE EQUIPMENT

In recent years, there has been much discussion between motorcycle garment manufacturers and the European Community concerning the protection standards for motorcycle apparel, which falls under the governmental category of Personal Protective Equipment (PPE).

The European Community rightly claims that when buying a PPE-garment the consumer must be able to rely on a minimum level of protection provided by the garment for its intended use. This level of protection must be either clearly indicated or implied by the design of the product and that any information provided with the products (often on hangtags) is accurate and complete.

Initially, these rules were described as the minimum standard for motorcycle garments intended for professional use, but as of 2010, the scope has been extended to motorcycle intended for leisure use. Standards for professional use have been deemed impractical for leisure use by essentially all manufacturers. Currently, there are no manufacturers complying with the European Union's requirements throughout an entire product range. Note that the CE standards for separate impact and back protectors are a different issue and do not apply to this topic.

In the coming years, European manufacturers will jointly develop a new set of standards for motorcycle garments in cooperation with the European Union. This will likely lead to the development of a new standard for professional use and a separate new standard for leisure use, to which all manufacturers will be required to comply. This is work in progress and we will keep all our partners updated.

## NEW STANDARDS

In anticipation of the coming new standards, we have been gradually making modifications and improvements to our products. As a first step, all EVA foam insert back panels have been removed from all jackets as of spring 2014. Although EVA foam inserts at the back and hips are not CE rated impact protection as clearly indicated on each product, we have chosen to remove these inserts from our products to prevent any confusion that these EVA foam panels are CE-level certified. Indications on all jackets, suits and trousers with pockets designed to fit CE-rated SEESOFT™ insert protector upgrades will remain.

## THE 'DROP TEST' EN1621-2: 2014

### Back protection standard

## EN 1621-2:2014: BACK PROTECTORS

Back protectors must undergo an energy transmission test to determine shock absorption levels to meet **EN1621-2:2014** specifications. The test, called a Drop Test, is performed with a 5kg (11lbs) percussion pin dropped from one meter to create the test impact energy of 50 Joules. During the test the protector is placed on a metal anvil. This test is conducted five times on various points of a predetermined Zone of Protection on the product.

Products must pass tests conducted under two conditions: at ambient temperature and at high humidity. Products may also undergo optional temperature tests: a low temperature impact test conducted at -10°C (14°F) and/or a high temperature impact test at +40°C (104°F).

The **EN1621-2:2014** standard includes two levels of protection:

**CE-LEVEL 1:** CE-Level 1 rated products provide the standard level of effective protection. The peak force measured at the center of the Zone of Protection shall not exceed a single strike value of 24 Kilo Newtons (kN) and the overall mean value shall not exceed 18kN.

**CE-LEVEL 2:** CE-Level 2 offers increased performance for riders who feel that their riding style exposes them to an increased level of risk. CE-Level 2 protectors must absorb twice as much energy from an impact as CE-Level 1 protectors, with the peak force at the center of the Zone of Protection not exceeding a single strike value of 12kN and the overall mean not exceeding 9kN.

## CE-DOCUMENTATION

CE-certification also requires technical documentation containing information demonstrating that the product properly complies with the CE-requirements which apply to it. This documentation must be assessed by a notified body as part of the CE-test. All relevant information regarding REV'IT! products with a CE-certification can be found inside the product packaging and on the Commerce Portal under the tab marked 'Sales Tools'. Dealers can also obtain documentation via our sales team.







# SEESOFT™ CE-LEVEL 2 BACK PROTECTOR INSERT

Premium protection

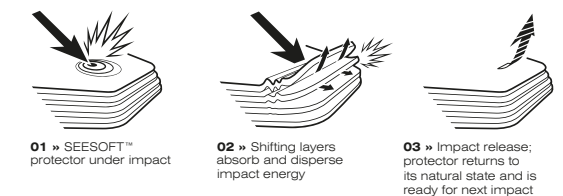
## SEESOFT™ CE-LEVEL 2 BACK PROTECTOR INSERT

Thanks to the new SEESOFT™ multi-impact insert back protector, you can upgrade every REV'IT! jacket with a CE-level 2 back protector, which means that it performs within the CE-Level 2 range of < 9kJ energy transmission. The fully flexible SEESOFT™ back protector insert follows the contours of the wearer's spine for optimum protection and is fully ventilated for added comfort.

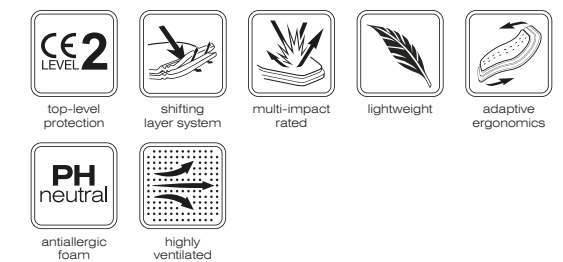
The SEESOFT™ CE-level 2 back protector insert is designed to absorb multiple impacts without compromising on comfort, ventilation or freedom of movement. Most REV'IT! jackets are designed to accommodate a SEESOFT™ CE-level 2 back protector. Each jacket will specify which type and size of SEESOFT™ back protector is suitable. By applying a multiple-layer concept, REV'IT! has developed a flexible back protector insert that performs consistently in all conditions.

The highly impact-resistant blend of Nitrile and Polynorborene rubber results in a memory foam that is multi-impact rated and CE-certified to the highest level (EN 1621-2:2014 - CE-Level 2). In the case of severe angular impact, the individual Memory foam layers will shift relative to one another, resulting in impact dispersion over a larger effective surface area, and therefore minimizing the energy that is transmitted to the spine and back.

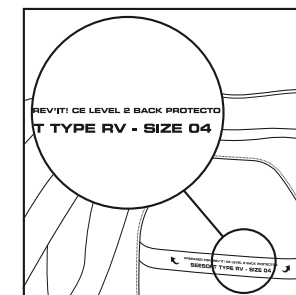
## SEESOFT™ SHIFTING LAYER CONCEPT



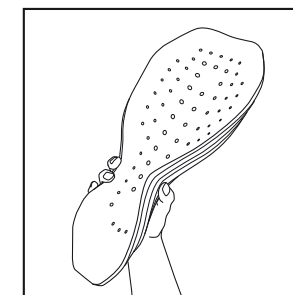
## SEESOFT™ PROPERTIES OVERVIEW



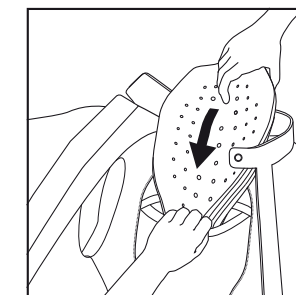
## HOW TO INSERT A SEESOFT™ BACK PROTECTOR INTO A REV'IT! GARMENT (EXAMPLE)



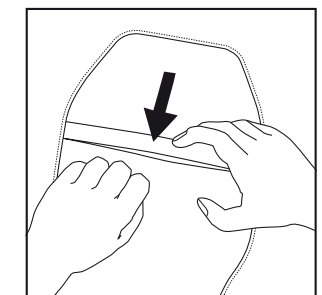
**01.** Check the marking on the garment's protector pocket to determine the correct type and size of SEESOFT™ protector needed.



**02.** Carefully fold the protector in order to fit it into its corresponding pocket. Attention: make sure the back protector is oriented with its widest sheet of foam placed closest to the wearer's body.



**03.** Insert the (slightly folded) protector into the open Velcro closure of the back protector pocket. The protector should fill out the entire pocket.



**04.** Make sure to securely close the pocket with the Velcro after inserting the SEESOFT™ protector.



## TRYONIC SIZE CHART

To ensure correct fitment and freedom of movement the protector should be fitted to the body.

### SIZE CHART BACK PROTECTION

ART.CODE	BACK PROTECTION	CM					INCHES				
		A: 150 - 160 cm B: 38 - 40,5 cm	A: 160 - 170 cm B: 40,5 - 43 cm	A: 170 - 180 cm B: 43 - 45,5 cm	A: 180 - 190 cm B: 45,5 - 48 cm	A: 190 - 200 cm B: 48 - 50,5 cm	A: 59 - 63 inch B: 15 - 16 inch	A: 63 - 67 inch B: 16 - 17 inch	A: 67 - 71 inch B: 17 - 18 inch	A: 71 - 75 inch B: 18 - 19 inch	A: 75 - 79 inch B: 19 - 20 inch
TPB001	Tryonic B.Protector Feel 3.7	-	S C=60-100	M C=70-110	L C=80-115	-	S C=23,5-39,5	M C=27,5-43,5	L C=31,5-45,5	-	
TPB003	Tryonic B.Protector See+	-	S C=60-100	M C=70-110	L C=80-115	XL C=80-120	S C=23,5-39,5	M C=27,5-43,5	L C=31,5-45,5	XL C=31,5-47,5	
TAT001	Tryonic Repl. Velcro Belt T.C.F. (FEEL3.7 & SEE+ Back Protector)	-	S	L	L	L	S	L	L	L	

### HOW TO MEASURE FOR A BACK PROTECTOR

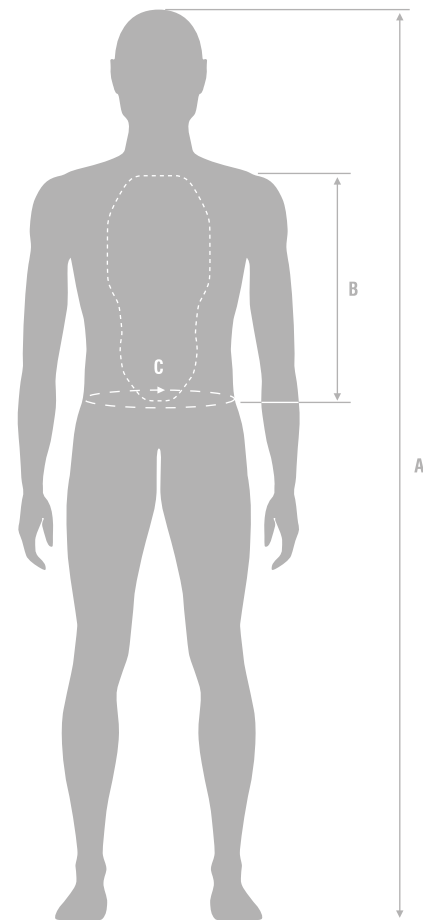
- (A) BODY LENGTH
- (B) LENGTH FROM WAIST TO SHOULDER
- (C) WAIST CIRCUMFERENCE (RANGE)



TPB001



TPB003



# SEEFFLEX™ CE-LEVEL 2 LIMB PROTECTORS

USP's



### CE-LEVEL 2 PERFORMANCE

CE-Level 2 performance on all limbs, all seasons. The ultimate motorcycle protectors must provide the highest level of protection, no matter what the circumstances are.



### TEAR & BREAK RESISTANT

The SEEFFLEX2925 material in SEEFFLEX™ protectors is extremely strong, making the open structured SEEFFLEX™ protectors extraordinarily tear and break resistant.



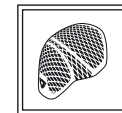
### COMFORT IN ALL CLIMATES

The SEEFFLEX2925 material remains virtually unchanged in its appearance, regardless of the temperature it is in. Besides maintaining its protective features, this also adds to the comfort the protectors bring. They uphold their pleasant feel, not stiffening in cold weather or becoming too soft in hot weather.



### PROTECTIVE FLEXHINGE AREA

Freedom of movement on the bike contributes greatly to the feeling of comfort when riding. SEEFFLEX™ limb protectors are therefore fitted with the revolutionary protective hinge area. This feature makes the protector extra flexible at the hinge area while conserving its protective surface, covering every limb joint.



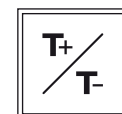
### 3D PRE-SHAPED FIT

The SEEFFLEX™ protectors are shaped according to our Engineered skin® philosophy. This means it actively protects the body against impact and it contributes to the rider's passive safety by offering protection that the rider won't notice when on a bike. Thanks to the 3D pre-shaped fit SEEFFLEX™ protectors fit perfectly in REV'IT! gear and therefore they fit perfectly to the body. Having 3D pre-shaped protectors also prevent them from moving around, keeping them in position in case of an impact.



### HIGHLY VENTILATED

SEEFFLEX™ protectors are designed to have an open structure, which optimizes both ventilation and breathability while at the same time diminishing weight. The protectors in motorcycle gear cover a substantial part of the body. Whereas the closed structure of most other protectors reduces the breathability and ventilation at these points vastly, the open structure of SEEFFLEX™ protectors enables full breathability at these crucial areas, while maintaining the highest level of impact protection.



### TEMPERATURE INSENSITIVE PERFORMANCE

SEEFFLEX™ protectors meet the CE-Level 2 standard at T+ and T-, meaning protectors are tested and approved between +40°C and -10°C. No matter the temperature or riding conditions you find yourself in, be in a black jacket on a hot summer day or commuting in winter weather, SEEFFLEX™ protectors are delivering the highest level of impact protection.



### EXCEEDING PROTECTIVE AREAS

Within the EN1621-1:2012 standard there are two test areas: Type A and Type B. SEEFFLEX™ protectors can be approved for both areas, depending on the intended usage. This allows for the use of smaller protectors (in ladies garments for example) while maintaining CE-Level 2 protection.



### INTERNAL EXPANSION STRUCTURE

The open SEEFFLEX™ structure allows the SEEFFLEX2925 material to expand in on itself under impact, dissipating impact energy out away from the protector surface and away from the body, resulting in exceptional impact defense.



### ADAPTIVE ERGONOMICS

The flexibility of the SEEFFLEX2925 material offers adaptive ergonomics to all SEEFFLEX™ protectors. This feature ensures a perfect, personalized fit which contributes to both comfort and protection.

## HOW TO READ A CE-MARKING

### VARIOUS LEVELS OF PROTECTION

When you purchase motorcycle gear, you expect it to meet certain demands. The same goes for the protectors inside the garment: they need to live up to their name and protect you. But just how well do they protect? To answer that question, a CE marking is applied.

### WHAT TO LOOK FOR

As shown in the graphic, a CE-marking begins with the indication that it is made for motorcycle riders (01). The intended limb or limbs (elbow, knee, shoulder or leg) can be found in the marking as well (02). Additional temperature tests for +40°C and -10°C are noted in 03 and 04. Finally, 05 describes the level of protection. 2 denotes CE-level 2, the highest level of protection.



\*\* 03 & 04 are optional tests: If this space is vacant, the test is not claimed

- 01 - Protective equipment for motorcycle riders
- 02 - Intended limb (e/k) & type indication (b/a)
- 03 - Low temperature impact test passed\*\*
- 04 - High temperature impact test passed\*\*
- 05 - Performance level

# Revit Back Protectors NZ Chart

		SEESOFT™					
		TYPE KN		TYPE RV			
		FPB002-2250-105	FPB002-2250-106	FPB003-2250-03	FPB003-2250-04	FPB003-2250-05	FPB003-2250-06
<b>LEATHER SUITS</b>							
FOL019	One Piece Hunter			46-48	50-54	56-58	
FOL020	One Piece GT-R			44-48	50-54	56	
FOL021	One Piece Replica			44-48	50-54	56	
FOL022	One Piece Masaru			44-48	50-54	56	
FOL023	One Piece Akira			44-48	50-54	56	
FCL016	Combi Masaru			46-48	50-54	56-58	
<b>LEATHER JACKETS</b>							
FJL044	Jacket Allure 2 ladies	34-38	40-46				
FJL046	Jacket Raven ladies	34-38	40-44				
FJL047	Jacket Tarmac Air Leather		46-58				
FJL048	Jacket Tarmac		46-58				
FJL049	Jacket Ignition 2		46-60				
FJL050	Jacket Ignition 2 ladies	34-38	40-44				
FJL053	Jacket Rebel ladies	34-38	40-46				
FJL054	Jacket Stellar			46-48	50-54	56-58	
FJL055	Jacket Galactic			46-48	50-54	56-58	60
FJL056	Jacket Galactic ladies			34-44	46		
FJL057	Jacket Roamer			46-48	50-54	56-58	60-62
FJL058	Jacket Roamer ladies			34-44	46		
FJL059	Jacket Redhook			46-48	50-54	56-58	
FJL060	Jacket Flatbush			46-48	50-54	56-58	
FJL061	Jacket Xena ladies			34-44			
FJL063	Jacket GT-R			46-48	50-54	56-58	
FJL064	Jacket Bellecour ladies			34-44			
FJL065	Jacket Allure Evo ladies			34-44	46		
FJL066	Jacket Adrenaline Evo			46-48	50-54	56-58	60
FJL067	Jacket Stream			46-48	50-54	56-58	
FJL068	Jacket Replica			46-48	50-54	56-58	
FJL069	Jacket Flatbush Vintage			46-48	50-54	56-58	
FJL070	Jacket Airstream			46-48	50-54	56-58	
FJL071	Jacket Pilot			46-48	50-54	56-58	
FJL072	Jacket Flatbush Air Vintage			46-48	50-54	56-58	
FJL073	Jacket Masaru			46-48	50-54	56-58	
FJL074	Jacket Akira			46-48	50-54	56-58	
FJL078	Jacket Xena 2 Ladies			34-44			
FJL084	Jacket Gibson			46-48	50-54	56-58	60
FJL089	Jacket Lane			46-48	50-54	56-58	
FJL090	Jacket Naples			46-48	50-54	56-58	
<b>OVERSHIRTS</b>							
FSO002	Tracer Overshirt				S-M	L-XXL	
FSO003	Stealth Hoody				S-M	L-XXL	
FSO005	Hudson Overshirt				S-M	L-XXL	
FSO006	Bison Overshirt				S-M	L-XXL	

SEESOFT™

		TYPE KN	
		FPB002-2250-105	FPB002-2250-106
<b>TEXTILE JACKETS</b>			
FJT116	Jacket Tornado		46-56
FJT117	Jacket Tornado ladies	34-38	40-44
FJT118	Jacket Ventura ladies	34-38	40-46
FJT126	Jacket Airwave		S-XZL
FJT127	Jacket Airwave ladies	34-38	40-46
FJT128	Jacket Mercury	XS	S-XYL
FJT130	Jacket Indigo ladies	34-38	40-46
FJT134	Jacket Horizon		S-XYL
FJT136	Jacket Melville		S-XXL
FJT137	Jacket Gracia Ladies		M L
FJT138	Jacket Opera		S-XXL
FJT139	Jacket Piazza		S-XXL
FJT140	Jacket Camden Ladies		M L
FJT144	Jacket Taksim Ladies	XS-M	L
FJT145	Jacket Avenue GTX		S-XXL
FJT146	Jacket Harlem		S-XXL
FJT147	Jacket Bastille		S-XXL
FJT148	Jacket Monti		S-XXL
FJT150	Jacket Sand 2		XYL-XZL
FJT153	Jacket Levante ladies		46-48
FJT154	Jacket Excalibur		XXL XYL
FJT155	Jacket Jupiter		XYL-XZL
FJT156	Jacket Jupiter ladies		44 46
FJT157	Jacket Nautilus		XYL-XZL

SEESOFT™

		TYPE RV			
		FPB003-2250-03	FPB003-2250-04	FPB003-2250-05	FPB003-2250-06
FJT159	Jacket Safari	XS	S-M	L-XXL	XYL-XZL
FJT160	Jacket Outback	XS	S-M	L-XXL	XYL-6XL
FJT161	Jacket Trafalgar	XS	S-M	L-XXL	XYL
FJT162	Jacket Victoria ladies	XS	S-L		
FJT163	Jacket Concorde	XS	S-M	L-XXL	XYL
FJT164	Jacket Oxford	XS	S-M	L-XXL	XYL
FJT169	Jacket Poseidon GTX		M	L-XXL	XYL
FJT171	Jacket Neptune GTX		M	L-XXL	XYL
FJT175	Jacket Melrose ladies	XS	S-L		
FJT176	Jacket Hillcrest	XS	S-M	L-XXL	XYL
FJT178	Jacket Windsor	XS	S-M	L-XXL	XYL
FJT179	Jacket Monte	XS	S-M	L-XXL	XYL
FJT180	Jacket GT-R Air	XS	S-M	L-XXL	XYL
FJT181	Jacket Voltiac		S-M	L-XXL	XYL-6XL
FJT183	Jacket Vapor		S-M	L-XXL	XYL
FJT184	Jacket Sand ladies	34-36	38-44	46	
FJT185	Jacket Elysee		S-M	L-XXL	
FJT186	Jacket Piazza 2		S-M	L-XXL	
FJT187	Jacket Avenue 2 GTX		S-M	L-XXL	
FJT188	Jacket Airforce	XS	S-M	L-XXL	XYL
FJT189	Jacket Shield		S-M	L-XXL	XYL
FJT190	Jacket Raceway	XS	S-M	L-XXL	XYL
FJT191	Jacket Voltiac ladies	34-36	38-44	46-48	
FJT192	Jacket Monroe ladies	34-36	38-44	46-48	
FJT193	Jacket Cayenne Pro		S-M	L-XXL	XYL
FJT194	Jacket Defender Pro GTX		S-M	L-XXL	XYL
FJT195	Jacket Dominator GTX		M	L-XXL	XYL
FJT196	Jacket Neptune GTX ladies	36	38-44	44-46	
FJT197	Jacket Zircon		S-M	L-XXL	XYL
FJT198	Jacket Jackson		S-M	L-XXL	XYL
FJT199	Jacket Tyler		S-M	L-XXL	XYL
FJT200	Jacket Dayton		S-M	L-XXL	XYL
FJT201	Jacket Airwave 2		S-M	L-XXL	XYL
FJT202	Jacket Airwave 2 ladies	36	38-44	46	
FJT203	Jacket Enterprise 2		S-M	L-XXL	XYL-XZL
FJT204	Jacket Safari 2		S-M	L-XXL	XYL-XZL
FJT205	Jacket Tornado 2		S-M	L-XXL	XYL-XZL
FJT206	Jacket Tornado 2 HV		S-M	L-XXL	XYL-XZL
FJT207	Jacket Tornado 2 ladies	34-36	38-44		
FJT208	Jacket Outback 2		S-M	L-XXL	XYL-XZL
FJT209	Jacket Outback 2 ladies	36	34-44	46	
FJT215	Jacket Metropolitan Ladies	XS	S-L		
FJT219	Jacket Jupiter 2		S-M	L-XXL	XYL-XZL
FJT222	Jacket Lucid		S-M	L-XXL	XYL-XZL
FJT226	Jacket Horizon 2		S-M	L-XXL	XYL-XZL
FJT227	Jacket Horizon 2 Ladies		S-M	L-XXL	XYL-XZL
FJT228	Jacket Sand 3		S-M	L-XXL	XYL-XZL
FJT232	Jacket Stockholm Ladies	XS	S-L		
FJT235	Jacket Ronson		S-M	L-XXL	XYL-XZL
FJT237	Jacket Downtown		S-M	L-XXL	XYL-XZL

